

PRODUCT INFO

SIZE | 4 3/4"x7"

FINISH | MATTE, MATTE/TEXTURED & GLOSSY/TEXTURED

EDGE | NON RECTIFIED

APPLICATION | WALL

TECHNICAL INFO

TRIM PIECES | NOT AVAILABLE

MOSAICS | NOT AVAILABLE

STAIR TREAD | NOT AVAILABLE

S.C.O.F | N/A

Matte



FLAT W



FLAT B



FLAT G

Matte/Textured



W



B



G



O



SF



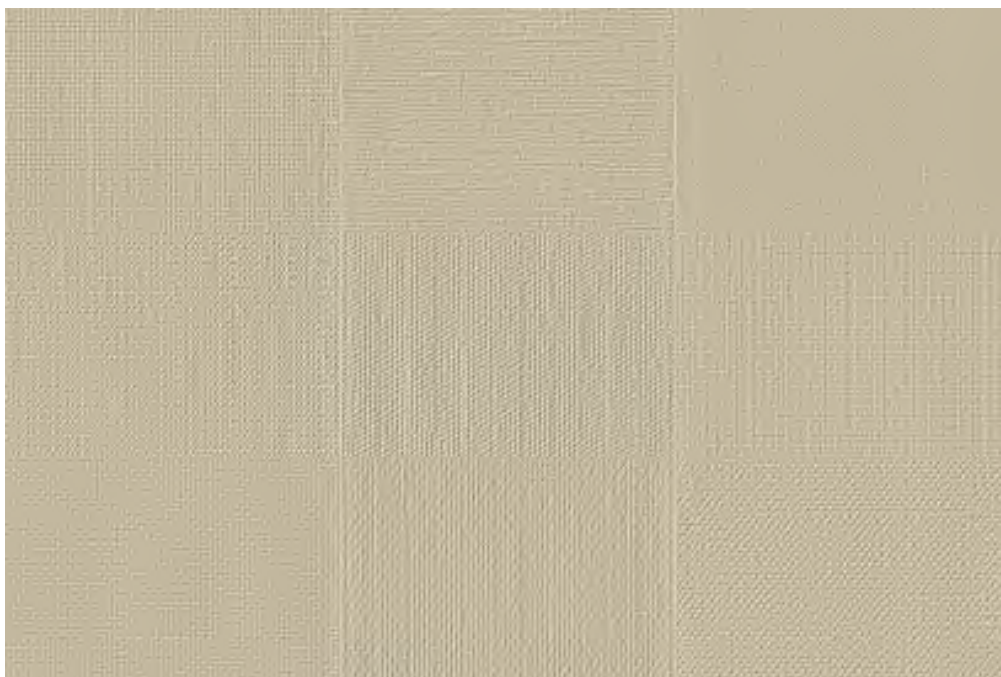
OT



T



N



Textured: Close up of 9 piece pattern. Color B featured.



DEC W



DEC B



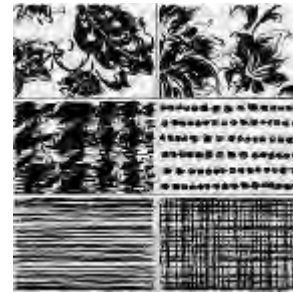
DEC G



ACT OT MIX



ACT OTT MIX



WN MIX



TEX BT MIX

SIZE	PCS PER PATTERN	FINISH	THICKNESS	SF / BOX	PCS / BOX	LBS / BOX	SF / PAL	LBS / PAL	BOX / PAL
4 3/4"x7" (Flat: B, G or W)	9	Matte	3/8"	5.12	22	17.92	486.4	1,746.06	95
4 3/4"x7" (B, G, N, O, OT, SF, T or W)	9	Matte/Textured	3/8"	5.12	22*	17.92	486.4	1,746.06	95
4 3/4"x7" (Dec: B, G or W)	8	Glossy/Textured	3/8"	5.12	22*	17.92	486.4	1,746.06	95
4 3/4"x7" (Act OT Mix or Act OTT Mix)	4	Matte/Textured	3/8"	5.12	4	17.92	486.4	1,746.06	95
4 3/4"x7" (WN Mix)	6	Matte/Textured	3/8"	0.94	6	3.09	180.48	637.14	192
4 3/4"x7" (Tex BT Mix)	3	Matte/Textured	3/8"	1.41	6	4.63	270.72	932.56	192

*A carton will contain a random mix of the 9 piece pattern.

